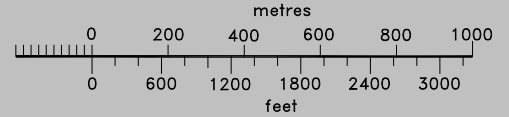
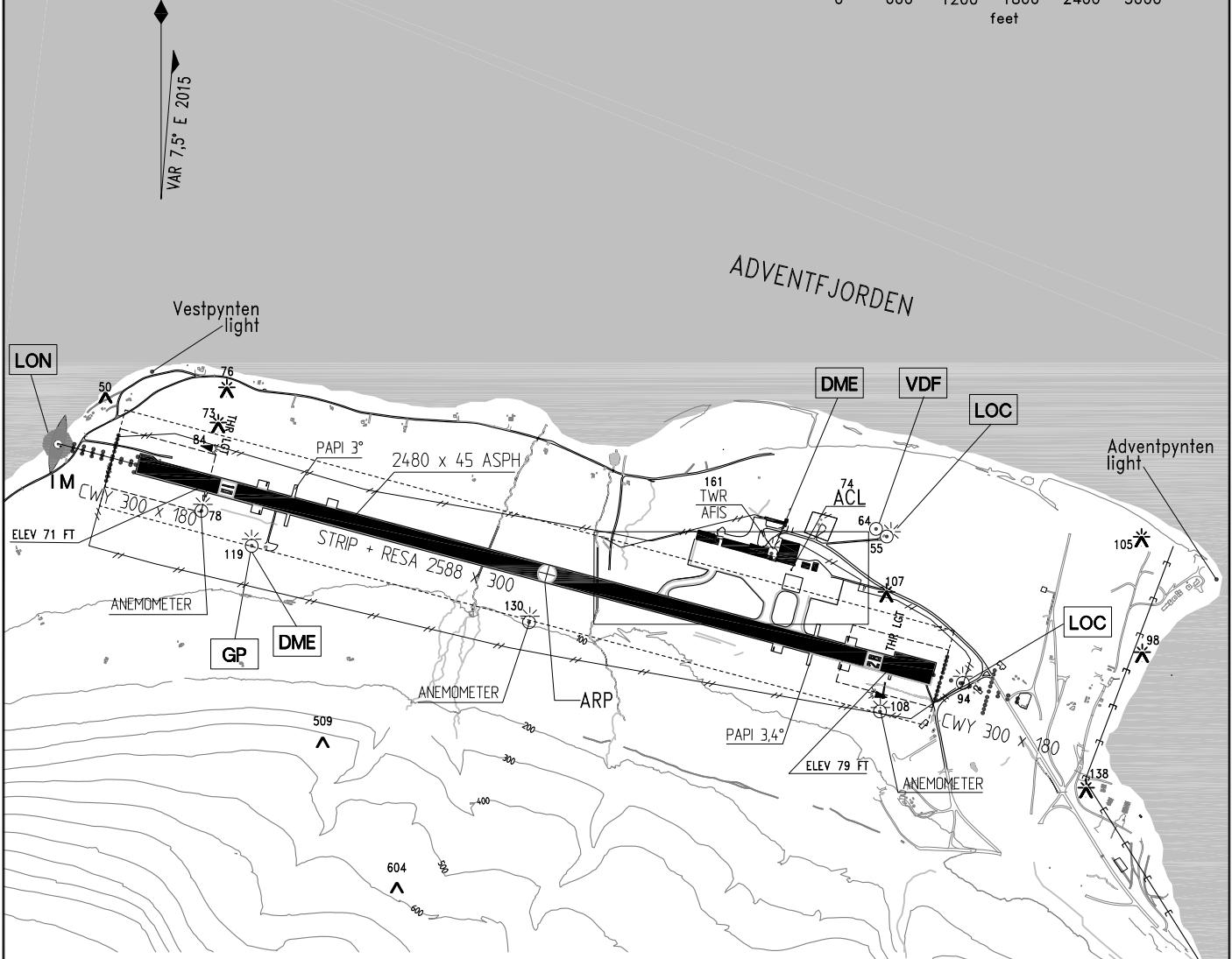


<b>AERODROME CHART</b>		78°14'46"N 015°27'56"E WGS 84		<b>AD ELEV</b> 94 FT	<b>AFIS</b> 118.100 MHz		<b>SVALBARD LONGYEAR NORWAY</b>		
RWY	BRG (GEO)	THRESHOLD		BEARING STRENGTH	DECLARED DISTANCES				TWY AND APRON
					TORA	ASDA	TODA	LDA	
10	105.32°	781455.12 N	0152514.24 E	PCN - 58/F/B/X/T	2208	2208	2508	1988	TWY A WIDTH 14M, ASPH
28	285.41°	781436.86 N	0153040.47 E	PCN - 58/F/B/X/T	2260	2260	2560	2138	TWY C/B WIDTH 23M, ASPH PCN - 58/F/B/X/T

DIMENSIONS IN METRES  
ELEVATIONS IN FEET

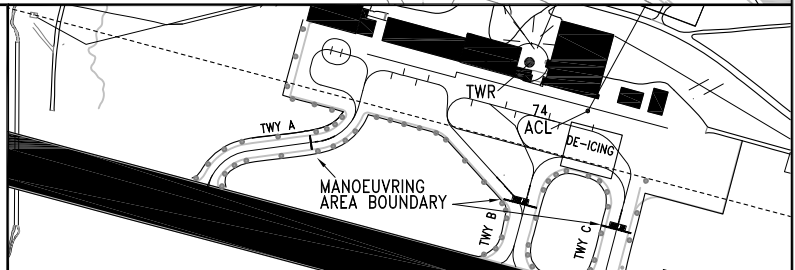


VAR 7,5° E 2015

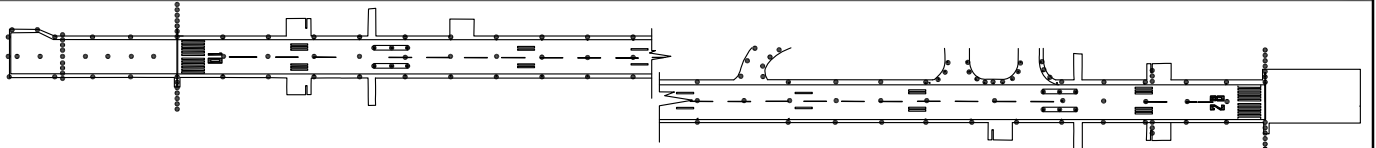


**NOTES-REMARKS**

- 1) SEQUENCED FLASHING LGT RWY 10/28 CL.
- 2) ACFT STAND PCN-58/F/B/X/T, APRON ELSE PCN-25/F/B/Y/U
- 3) BOTH LEFT AND RIGHT HAND BAR IS DIRECTED 8° S OF RCL. RESTRICTED TO MAX 5,8 NM FM THR.
- RWY GROOVED



**LIGHTING AND MARKING AIDS RWY 10/28 AND EXIT TWY**



RWY	APCH	THR	PAPI	CL	EDGE	END
10	W CL/XBAR LIH 1)	G LIH	3.0° MEHT 47FT	2160M W LIH	1380M W/660M Y LIH	R LIH
28	W CL/XBAR LIH 1)	G LIH	3.4° MEHT 50FT 3)	2160M W LIH	1320M W/720M Y LIH	R LIH

CHANGES: TWY A, PAPI, NOTES-REMARKS, APRON EXPANSION IN WEST, MAG VAR AND EDITORIALS.